

COPYRIGHT © STUDIO TUUMAT OY

All designs and patterns in OTTOBRE design® -magazine are protected under the Copyright Act. No material may be reproduced in part or in whole. All commercial and industrial use is strictly prohibited. ALL RIGHTS RESERVED © Studio Tuumat Oy, FINLAND 2006

Suomi-moite/lands- Deutsch-Englisch-svenska

Käivä-oriella kirjotetaan
suomen (s)venskan
kääntäen
kääntäen
langensuunta

På manuskripten används
följande förkortningar: MF
mattfrån
mattbäck
traddräkning

The following abbreviations are
used on the pattern sheets:

MF
CD
goda

Os-lit polttoainelaji voidaan las-
vågarna utifrån ange på
mattfrån MF
mattbäck MB
traddräkning TD

Auf den Schnittblättern werden
die Abkürzungen wie folgt ver-
wendet: MF
vordere Mitte
hintere Mitte
Fußboden

KAAVA-ARIELLA KÄYTTÄVÄT MERKIT SCHNITTBLATTZEICHEN PATTERNBLATTZEICHEN - PATTERN SYMBOLS SYMBOLER SOM ANVÄNDS PÅ MÖNSTERBLÄTTEN

KE/KCT-viiva

vandare Mitta (VM)
hintere Mitte (HM)

suutteenoor (SF)

väljerevachter (VW)

ottel linja (LF)

ottel lank (LL)

mattfrån (MF)

mattbäck (MB)

langensuunta (LS)

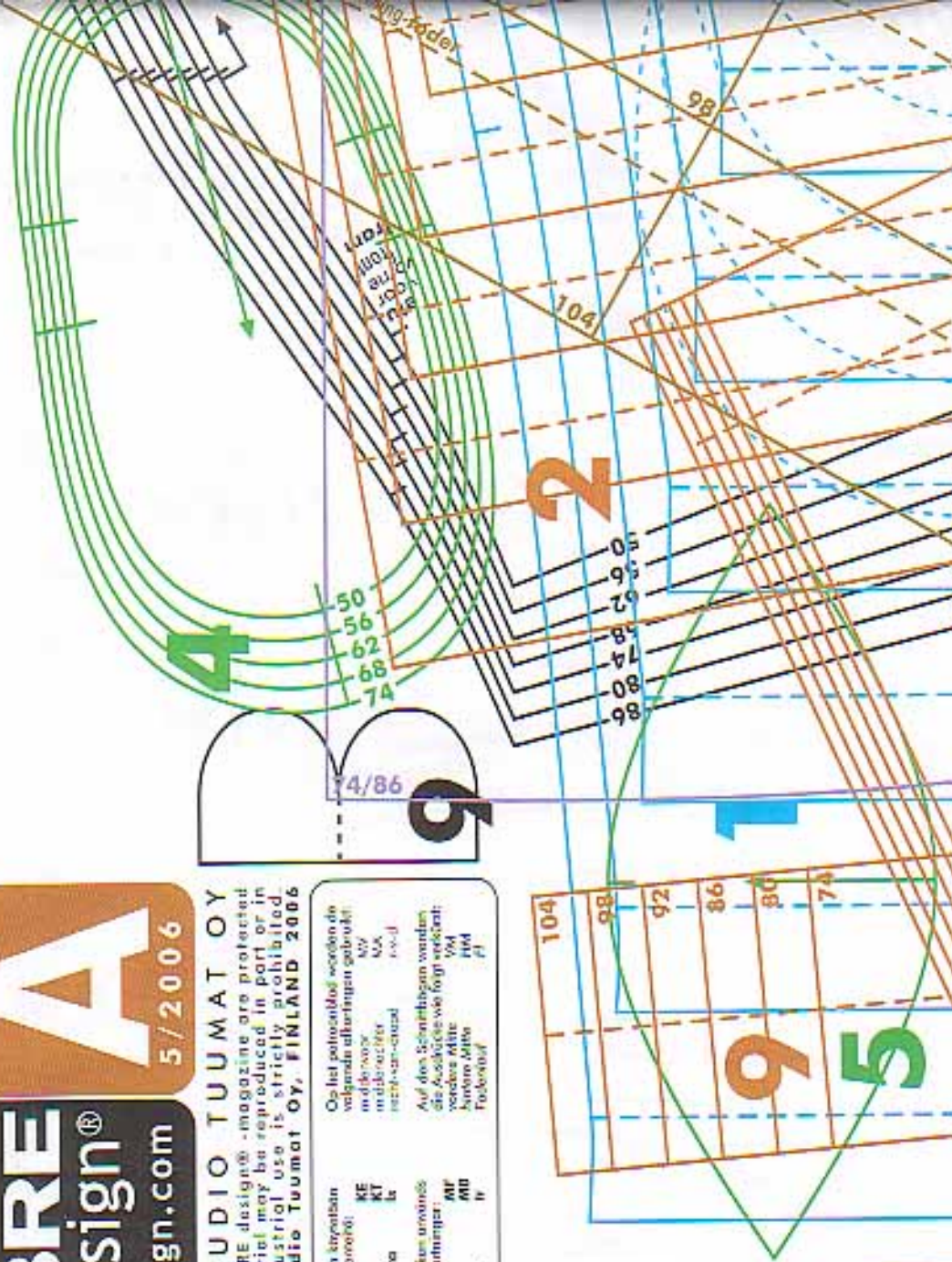
Fuolnisauf (FH)

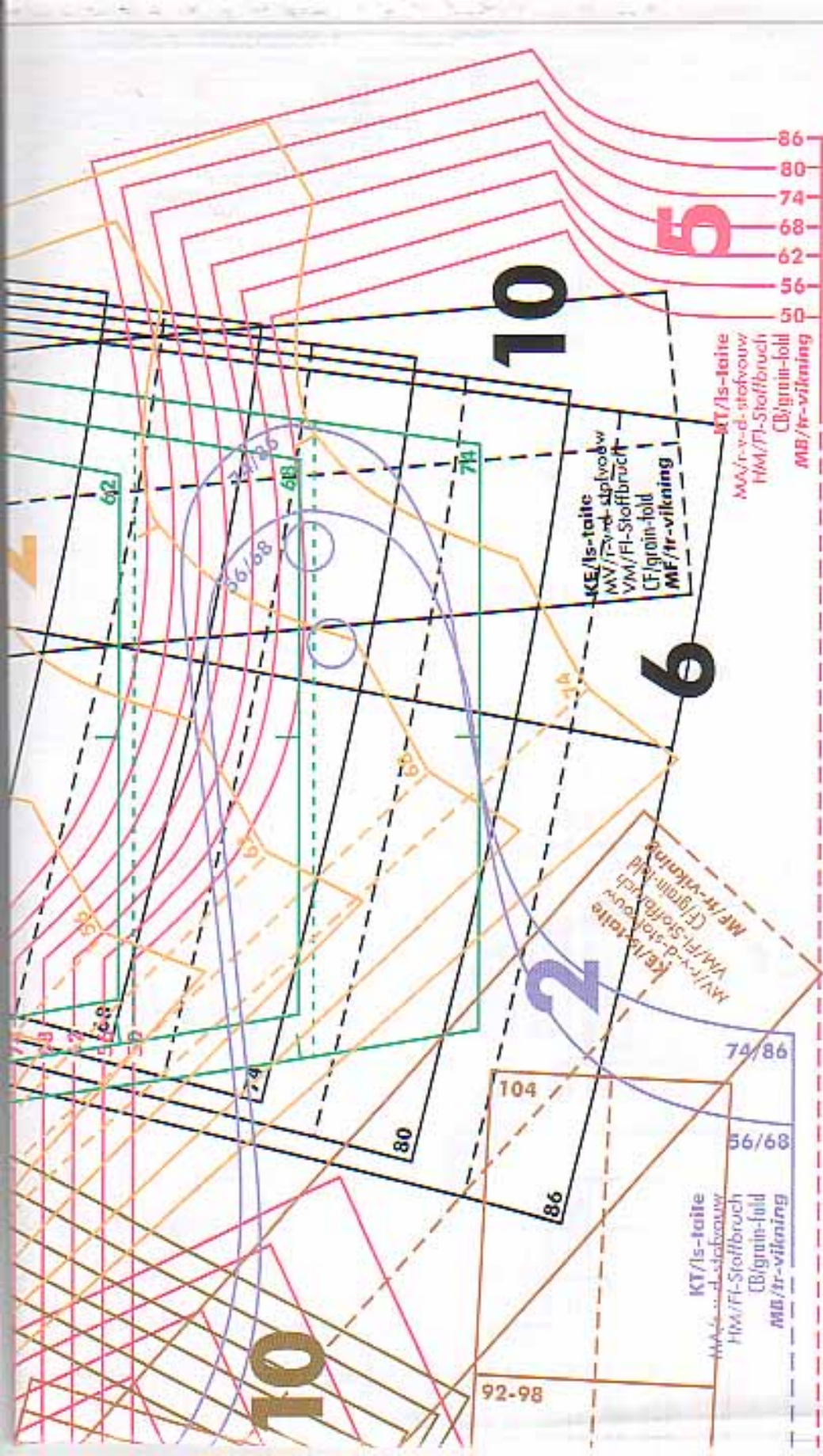
recht-weg-ansoof (r-w-d)

grönlint (GR)

tråddräkning (TR)

failes/ tailevies





10

10

6

2

5

KE/Is-taite
 MV/tr-v-d-stofvouw
 VM/FI-Stoffbruch
 CF/grain-fold
 MF/tr-vilning

KT/Is-taite
 MA/tr-v-d-stofvouw
 HM/FI-Stoffbruch
 CB/grain-lobli
 MB/tr-vilning

KE/taite
 MV/tr-v-d-stofvouw
 VM/FI-Stoffbruch
 CF/grain-fold
 MF/tr-vilning

KT/Is-taite
 MA/tr-v-d-stofvouw
 HM/FI-Stoffbruch
 CB/grain-fold
 MB/tr-vilning

86
80
74
68
62
56
50

92-98

104

86

80

66/68

74/86

48

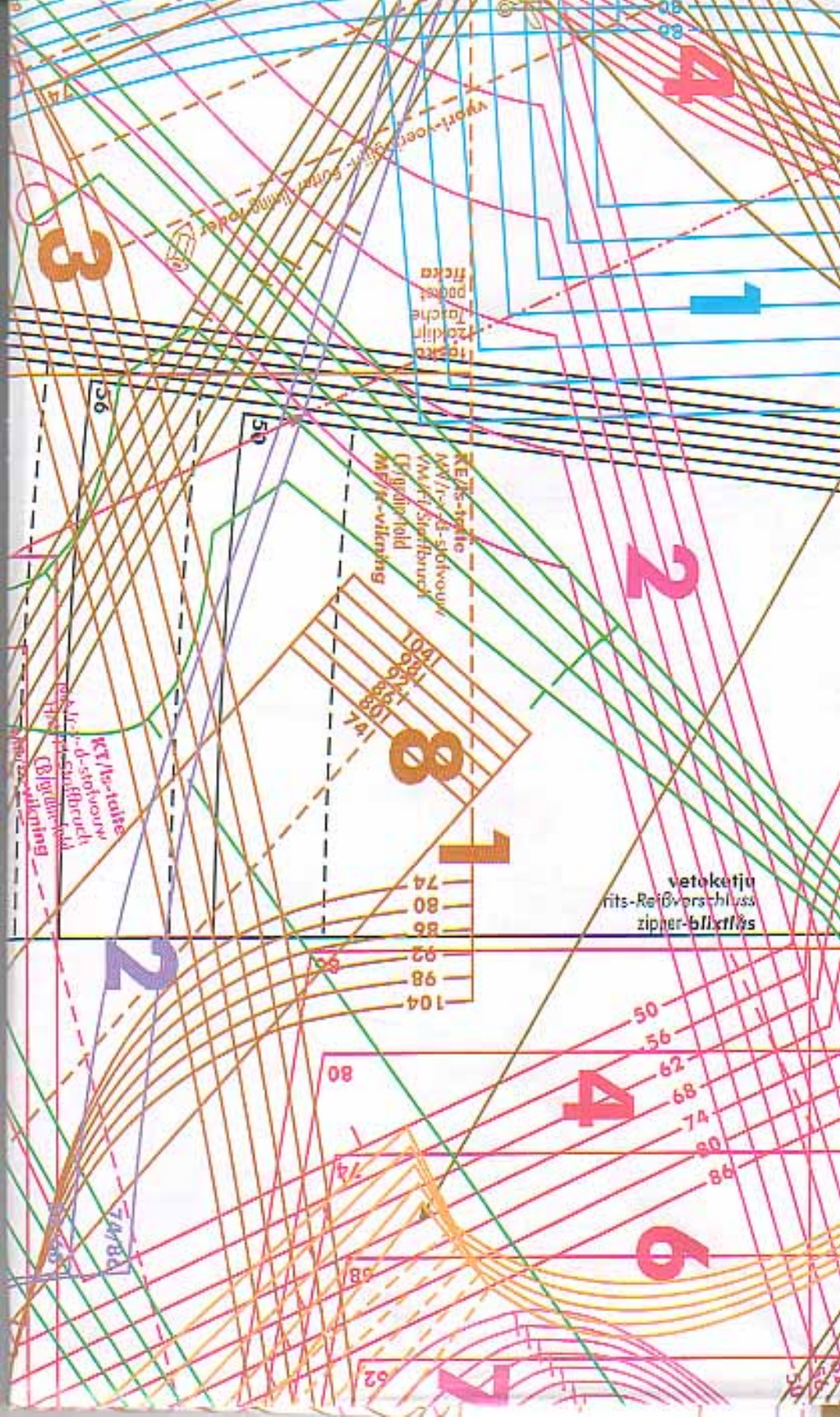
74

62

74/86

56/68

710 6 1 32 1 81 2 510 2 5 6 6 6



86

4

3

top-
kollin
försche
pöppel
ficka

1

56

50

KLEB-STICKE
NÄR-ED-SÖTVORU
KNAK-SÖTVORU
U-GRÄPPLÖD
M/FR-VÄNING

2

104
92
80
74

8

1

104
98
92
86
80
74

votoketjij
rits-Reißverschluss
zipper-blixtfläs

KT/Ne-tutte
...d-stövovur
KNAK-SÖTVORU
U-GRÄPPLÖD
M/FR-VÄNING

2

50

56

62

68

74

80

86

4

92

98

104

110

116

122

128

134

52

7

74/84

80/84

86/84

92/84

98/84

104/84

110/84

116/84

122/84

128/84

134/84

140/84

146/84

152/84

158/84

164/84

170/84

176/84

182/84

188/84

194/84

200/84

206/84

212/84

218/84

224/84

230/84

236/84

242/84

248/84

254/84

260/84

266/84

272/84

278/84

284/84

290/84

296/84

302/84

308/84

314/84

320/84

326/84

332/84

338/84

344/84

350/84

356/84

362/84

368/84

374/84

380/84

386/84

392/84

398/84

404/84

410/84

416/84

422/84

428/84

434/84

440/84

446/84

452/84

458/84

464/84

470/84

476/84

482/84

488/84

494/84

500/84

506/84

512/84

518/84

524/84

530/84

536/84

542/84

548/84

554/84

560/84

566/84

572/84

578/84

584/84

590/84

596/84

602/84

608/84

614/84

620/84

626/84

632/84

638/84

644/84

650/84

656/84

662/84

668/84

674/84

680/84

686/84

692/84

698/84

704/84

710/84

716/84

722/84

728/84

734/84

740/84

746/84

752/84

758/84

764/84

770/84

776/84

782/84

788/84

794/84

800/84

806/84

812/84

818/84

824/84

830/84

836/84

842/84

848/84

854/84

860/84

866/84

872/84

878/84

884/84

890/84

896/84

902/84

908/84

914/84

920/84

926/84

932/84

938/84

944/84

950/84

956/84

962/84

968/84

974/84

980/84

986/84

992/84

998/84

1004/84

1010/84

1016/84

1022/84

1028/84

1034/84

1040/84

1046/84

1052/84

1058/84

1064/84

1070/84

1076/84

1082/84

1088/84

1094/84

1100/84

1106/84

1112/84

1118/84

1124/84

1130/84

1136/84

1142/84

1148/84

1154/84

1160/84

1166/84

1172/84

1178/84

1184/84

1190/84

1196/84

1202/84

1208/84

1214/84

1220/84

1226/84

1232/84

1238/84

1244/84

1250/84

1256/84

1262/84

1268/84

1274/84

1280/84

1286/84

1292/84

1298/84

1304/84

1310/84

1316/84

1322/84

1328/84

1334/84

1340/84

1346/84

1352/84

1358/84

1364/84

1370/84

1376/84

1382/84

1388/84

1394/84

1400/84

1406/84

1412/84

1418/84

1424/84

1430/84

1436/84

1442/84

1448/84

1454/84

1460/84

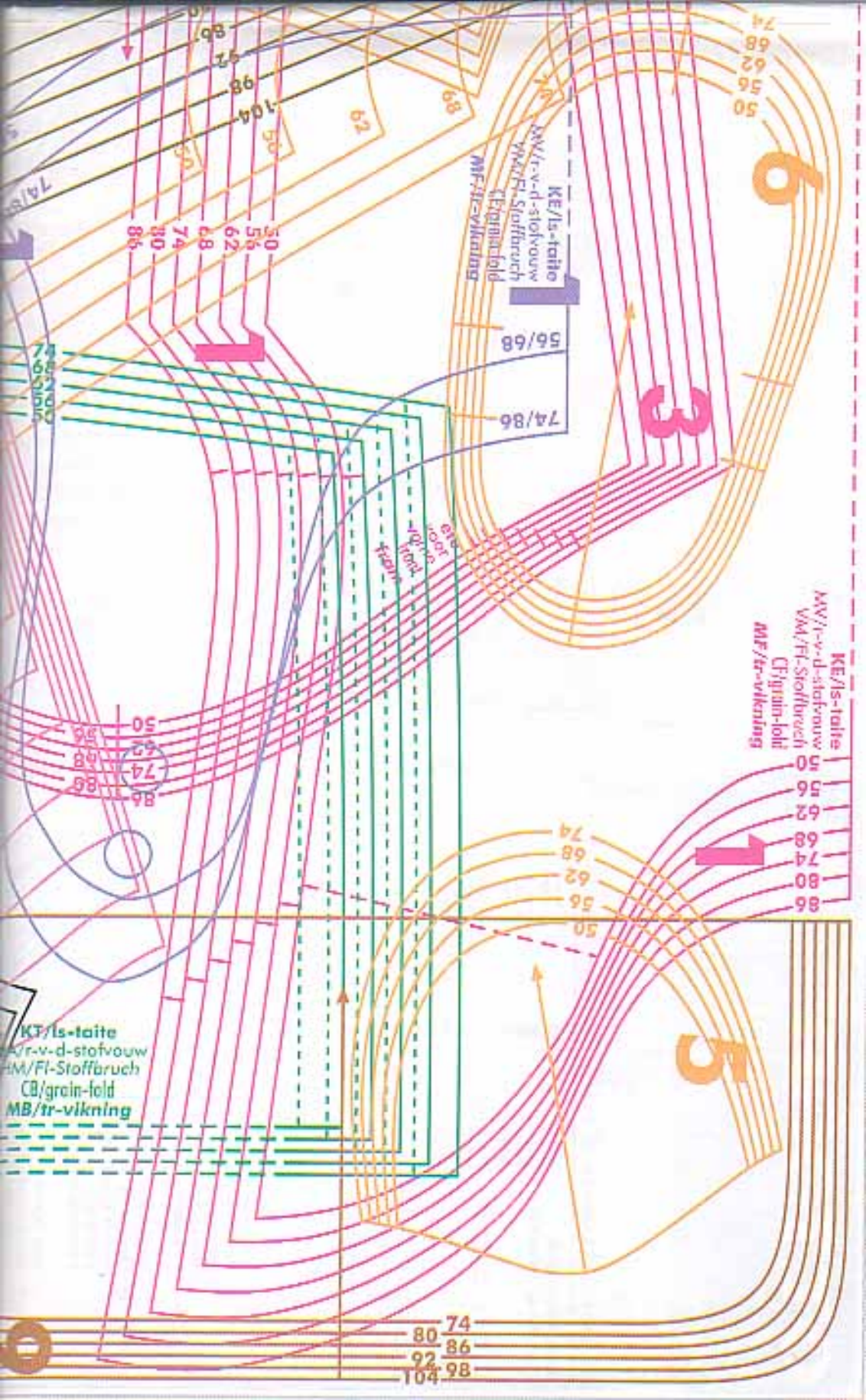
1466/84

1472/84

1478/84

1484/84

1490/84



KE/ls-taite
 MN/v-d-stofvouw
 VW/Fl-Stoffbruch
 CF/grain-fold
 MF/tr-vikning

86
 80
 74
 68
 62
 56
 50

86
 80
 74
 68
 62
 56
 50

86
 80
 74
 68
 62
 56
 50

86
 80
 74
 68
 62
 56
 50

KE/ls-taite
 MN/v-d-stofvouw
 VW/Fl-Stoffbruch
 CF/grain-fold
 MF/tr-vikning

56/68
 74/86

86
 80
 74
 68
 62
 56
 50

86
 80
 74
 68
 62
 56
 50

86
 80
 74
 68
 62
 56
 50

KT/ls-taite
 MN/v-d-stofvouw
 VW/Fl-Stoffbruch
 CF/grain-fold
 MF/tr-vikning

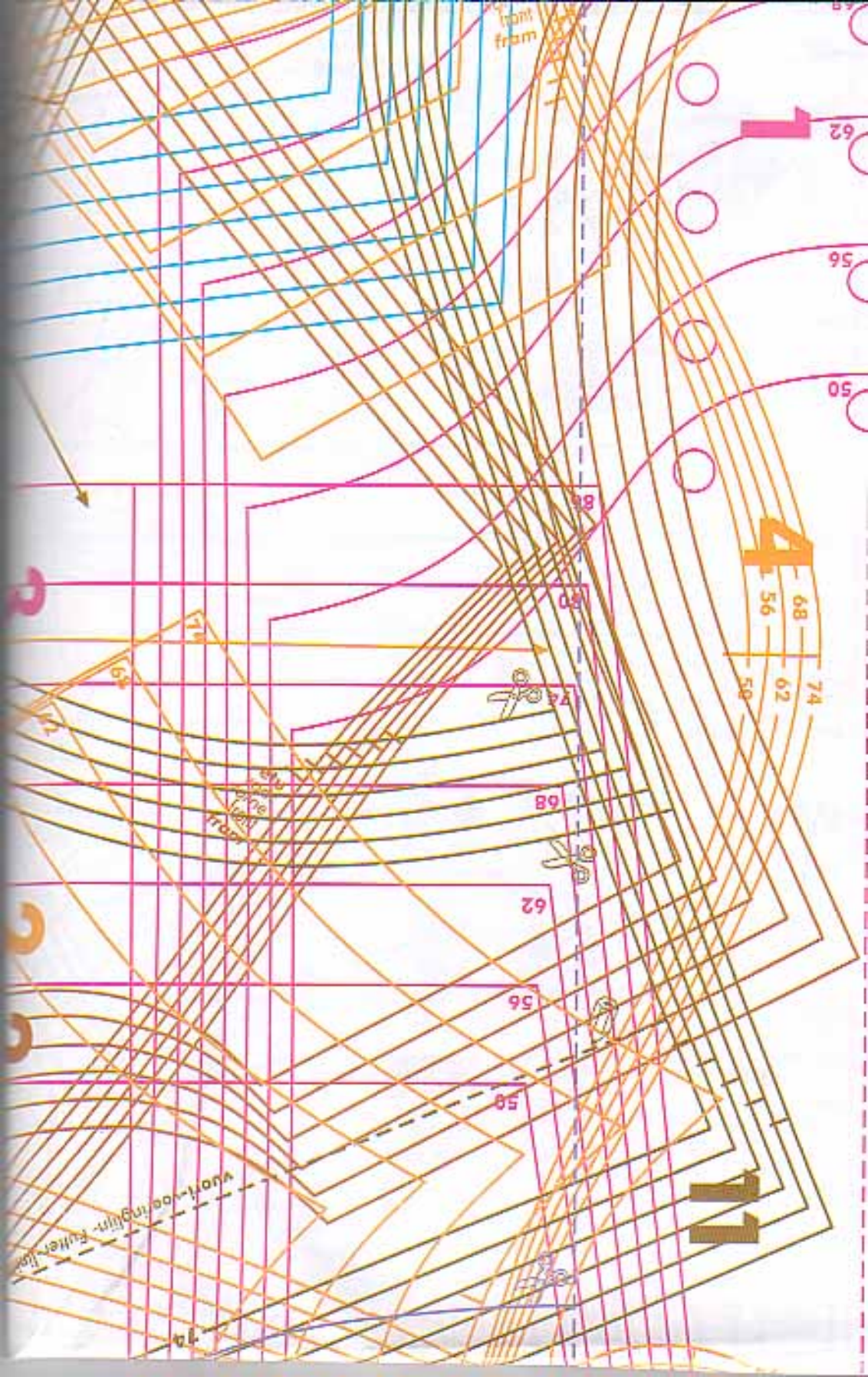
86
 80
 74
 68
 62
 56
 50

86
 80
 74
 68
 62
 56
 50

86
 80
 74
 68
 62
 56
 50

86
 80
 74
 68
 62
 56
 50

86
 80
 74
 68
 62
 56
 50



front from

62

56

50

4

68

56

62

74

58

88

80

78

68

62

56

58

left side front

fuller line

12

Stoppinnu
stikkin
sticking line
peinstreife

hakkimerkki
Overstich
sötnaken
näh / stitching
stitch mark

Indre-
falde
pleat
stall
veek

Johanne kausvasta
nach dem Muster
nacharbeiten
overstikken som perstov
ette kvar pattum
frette kvar pattum

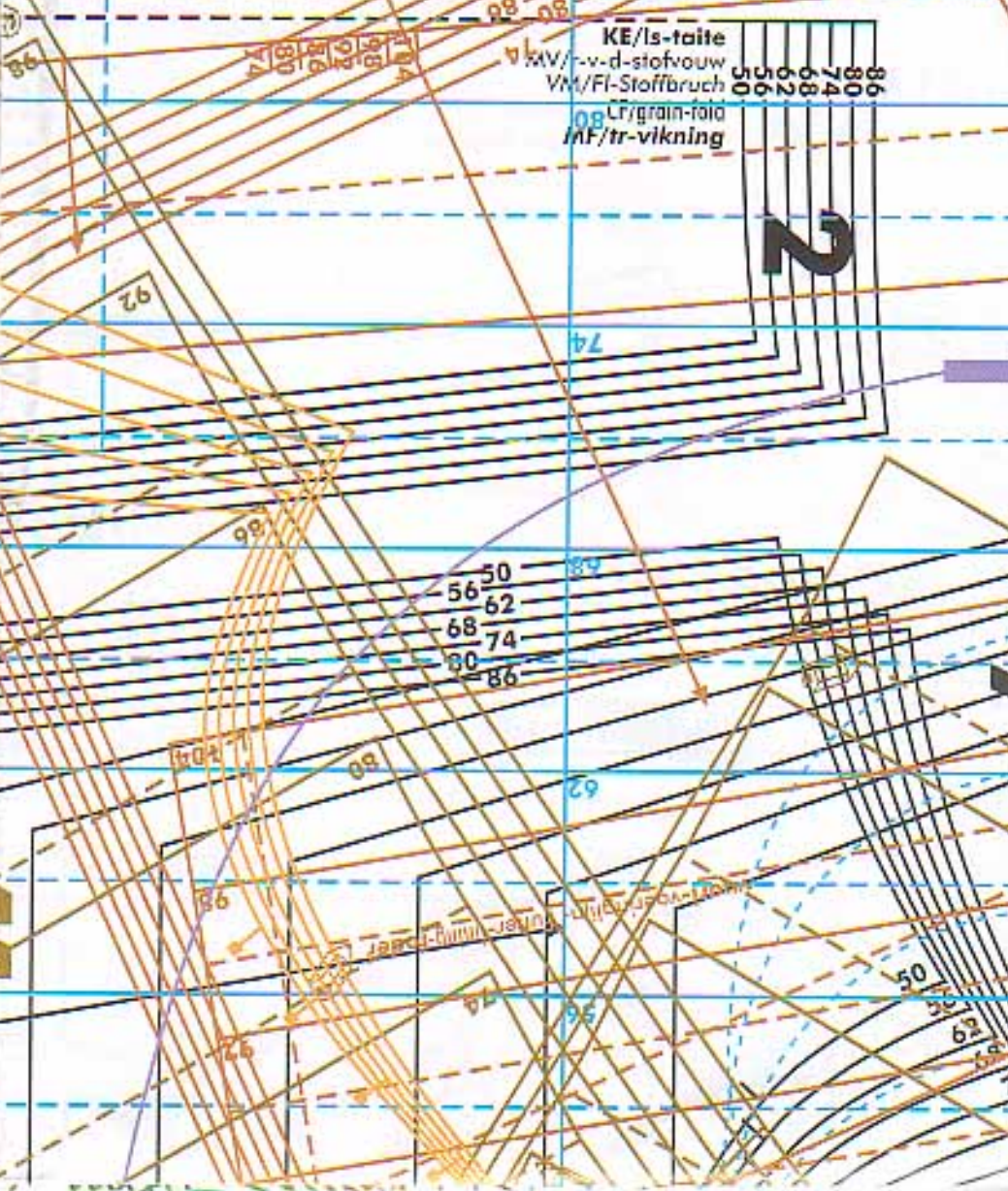
naapil
knapp
knapp
kallin
knappo

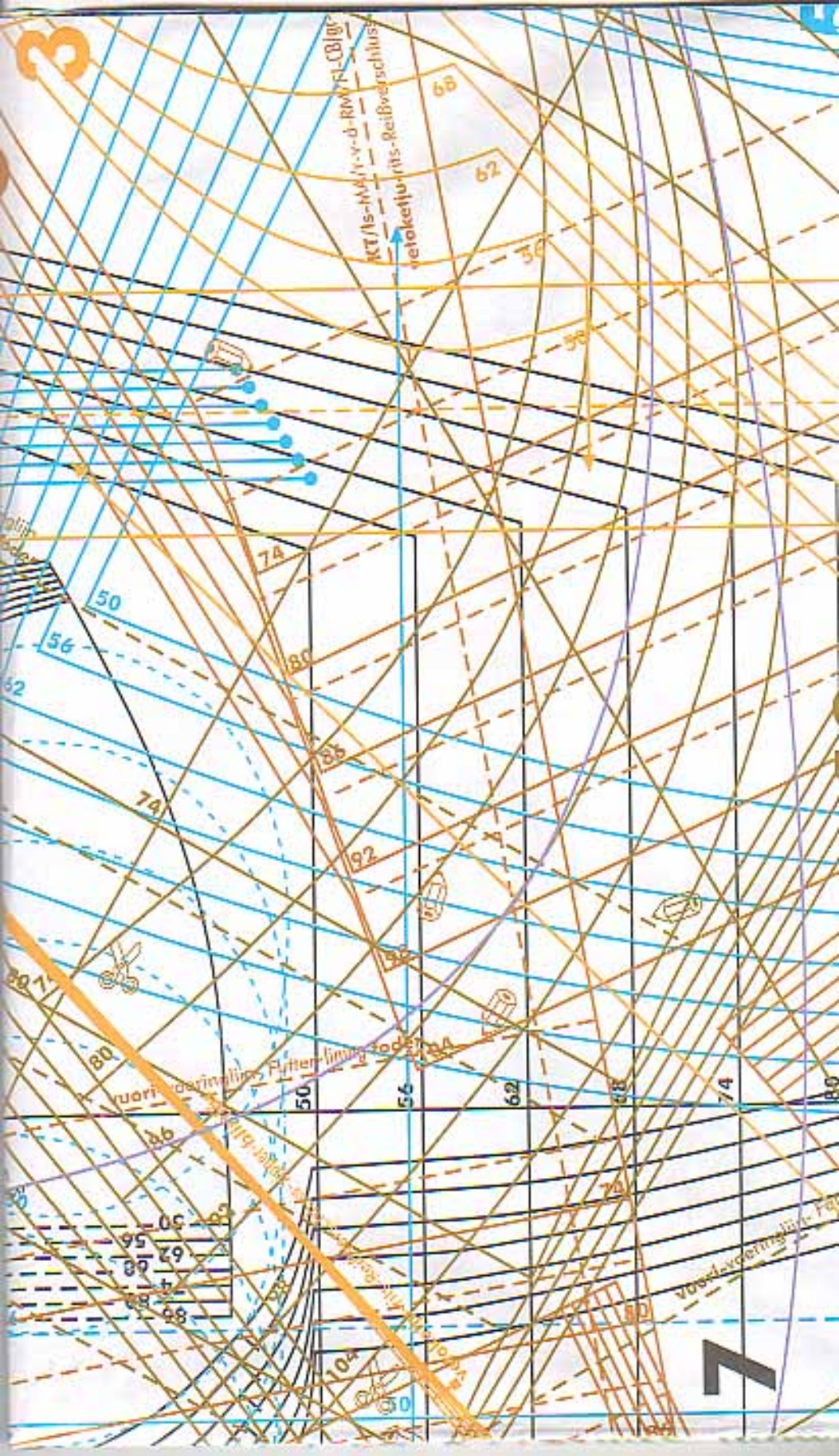
napilnig
Knopflech
knappogul
kallantid
knappskel

rekkontroll
Die
nennel
qydel
ölysch

hullio
Stilles
suh
suh / dholer

KE/ls-toite
VV/r-v-d-stofvouw
VM/FI-Stoffbruch
FI/grain-foild





3

KT/15-114/11-v-d-RNW-Fl-CBlgr
vetoketju-rints-Reißverschluss

olip

807

80

86

85

89

88

88

88

88

vuori, perinnellinen Putter-linng

80

86

85

89

88

88

88

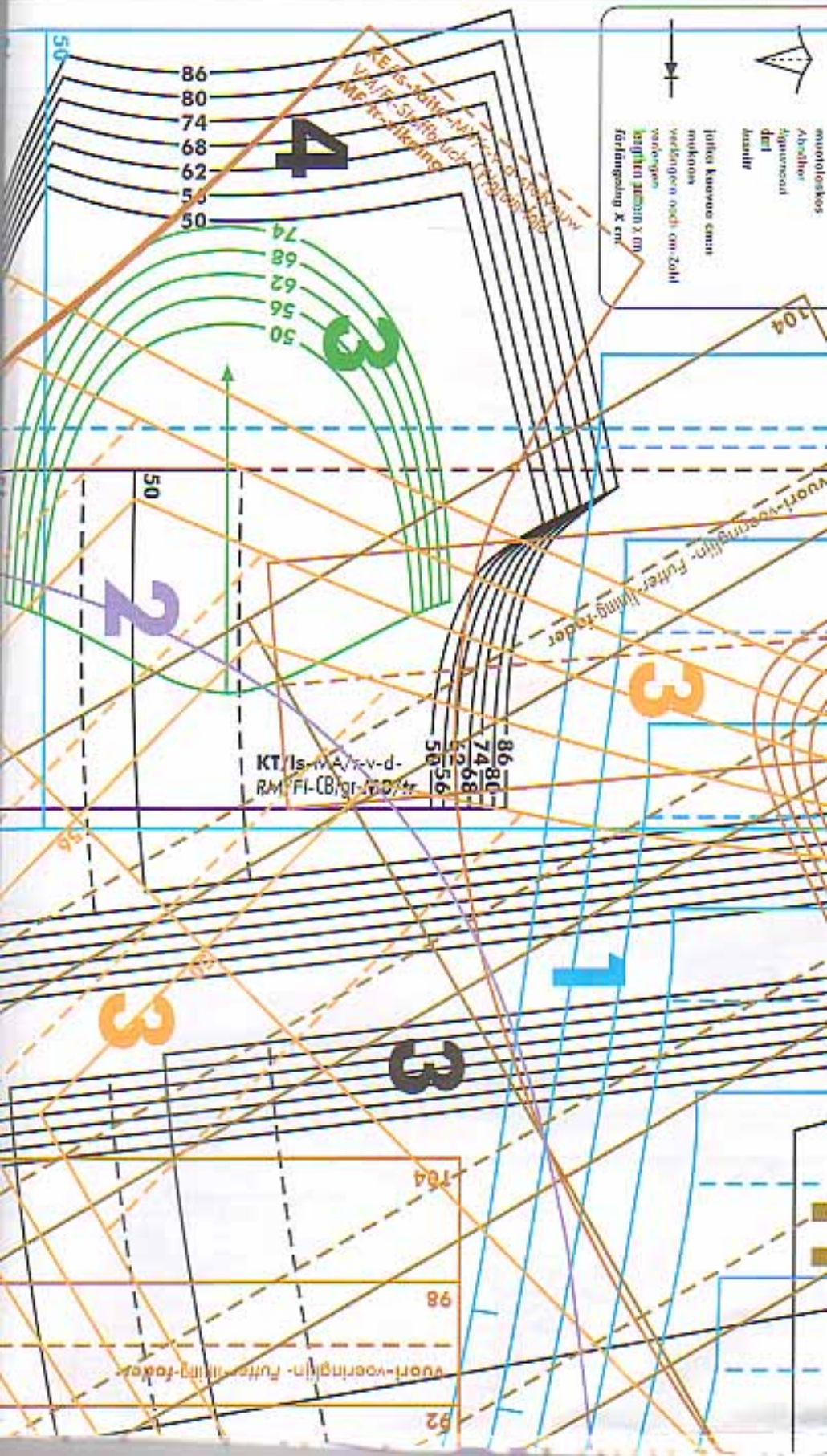
88

7



smurolaokosko
 Abzähler
 Äquivalent
 der
 Anzahl

toluk kuwuw emm
 mknknw
 vevknkn ooch em-Zahl
 vevknkn
 knknkn x m
 förknknkn X cm



KEAS-Abt. M...
 V...-Stiftung
 ME...

4

3

2

3

1

3

3

KT/Is-wA/v-d-
 RM/FI-CB/gr-pp/tr

86 80
 74 68
 56 50

50

86
 80
 74
 68
 62
 56
 50

74
 68
 62
 56
 50

104

104

104

98

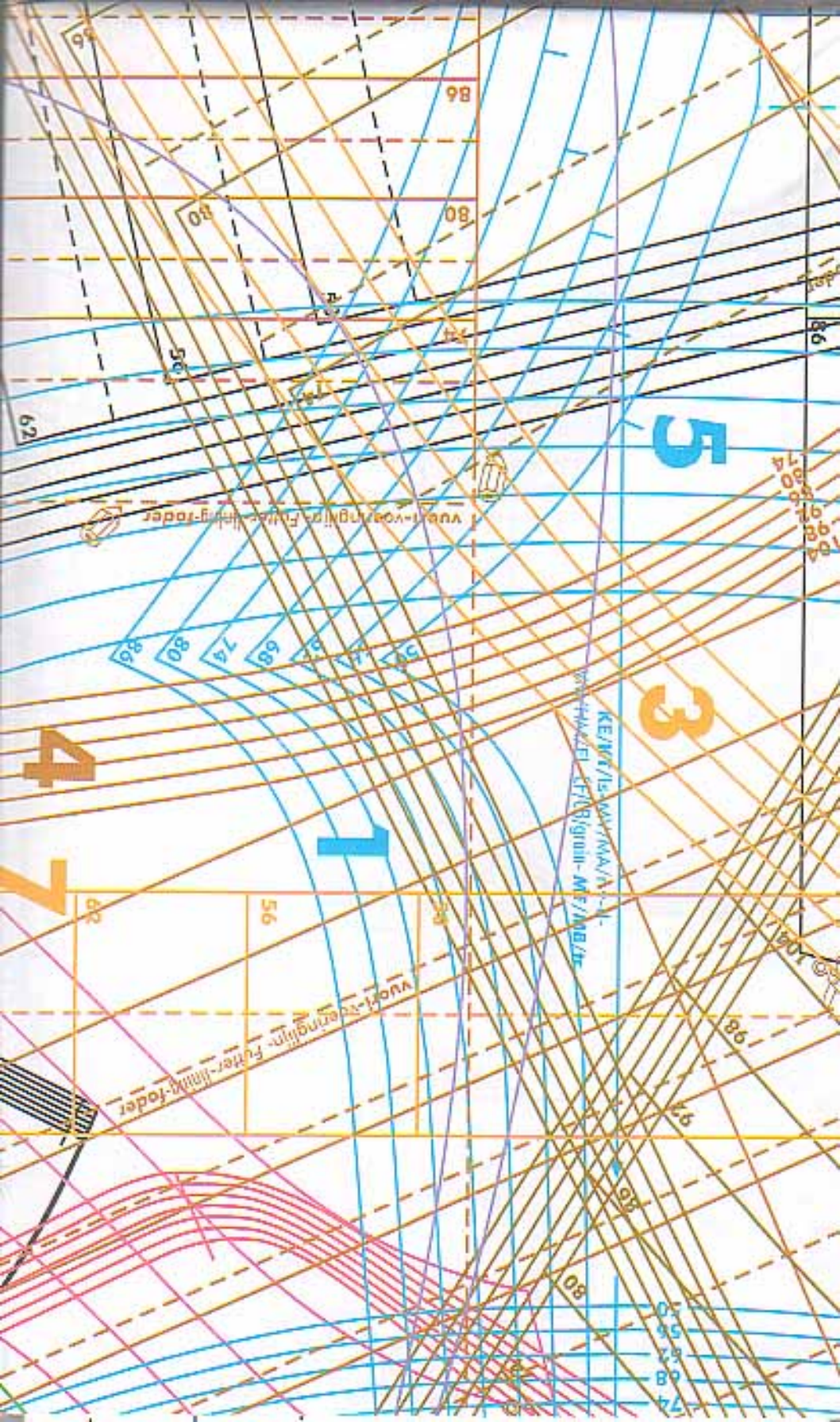
92

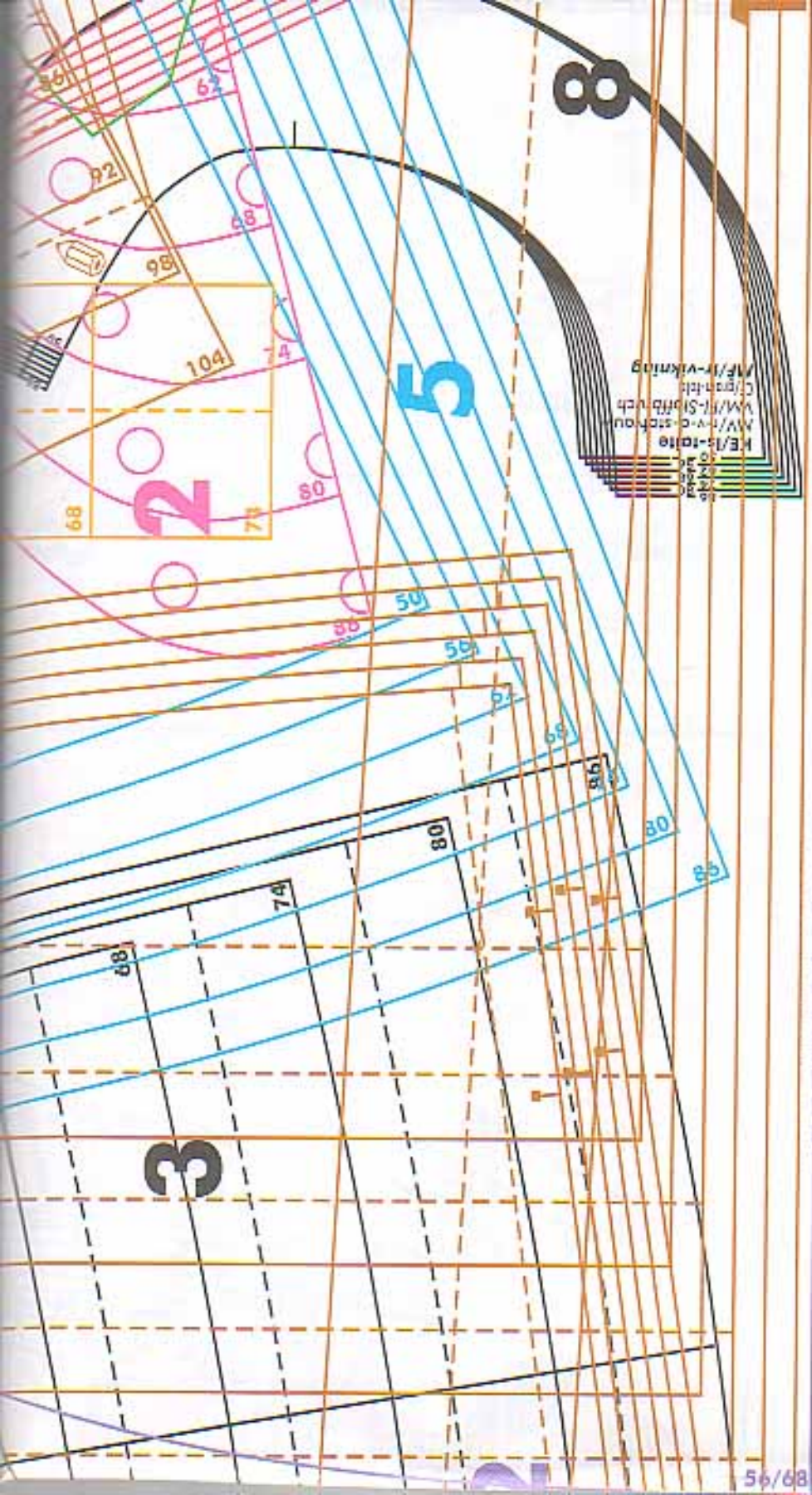
quart-voeringlin-futter-ling-feder

quart-voeringlin-futter-ling-feder

quart-voeringlin-futter-ling-feder

quart-voeringlin-futter-ling-feder





371

3475

8

